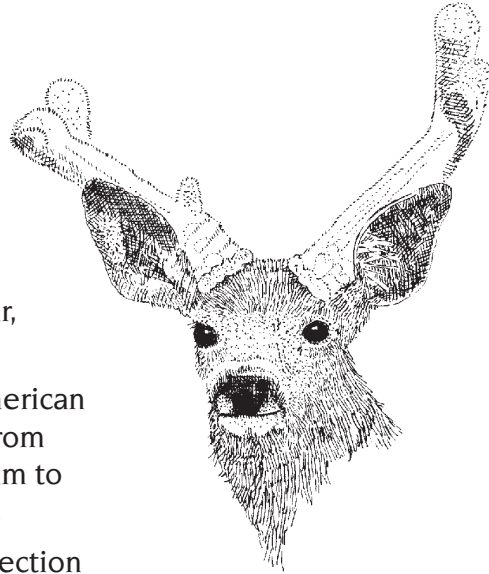


**NO HUNTING IS ALLOWED AT THE FOLLOWING LOCATIONS:**

- All lands west of Highway 49;
- The main body of Lake Clementine and adjacent lands within 150 yards of the lake;
- Within 150 yards of any access road, building, or campground, including Ruck-A-Chucky, Mineral Bar, and Cherokee Bar;
- The Middle Fork of the American River and adjacent lands from Highway 49 Bridge upstream to the Lake Clementine Dam;
- All lands west of the intersection of Old and New Auburn-Foresthill roads; and
- Any private property.



**KEEP IN MIND:**

- There is no area open to sight-in weapons.
- There are no areas open for target practice.

For complete hunting regulations, visit [www.wildlife.ca.gov/hunting](http://www.wildlife.ca.gov/hunting).



# Auburn State Recreation Area Hunting Information

---

*Hunting is allowed within Auburn State Recreation Area with the following restrictions:*

---

**SEASON:** Hunting is allowed during the regular hunting season established by the Fish and Game Commission.

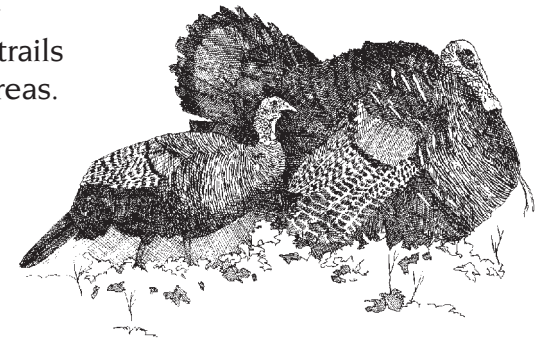
**HOURS:** Generally, hunting times are between half an hour before sunrise and half an hour after sunset **except** spring turkey season, where shooting hours end at 4:00 p.m.

**SPECIES:** Deer, California quail, dove, bandtail pigeon and wild turkey

**METHOD:** Only **shotguns, rifles, and bows and arrows** may be used, and only in compliance with all Fish and Game Commission regulations and licensing requirements. Except for shotguns and rifles used for hunting during the hunting season, all firearms, loaded or unloaded, are prohibited in the Auburn State Recreation Area (CCR 4113).

**TRAILS:** Many recreational trails run through open hunting areas. For safety purposes, please stay at least 150 yards away from recreational trails.

(Continued on back page)



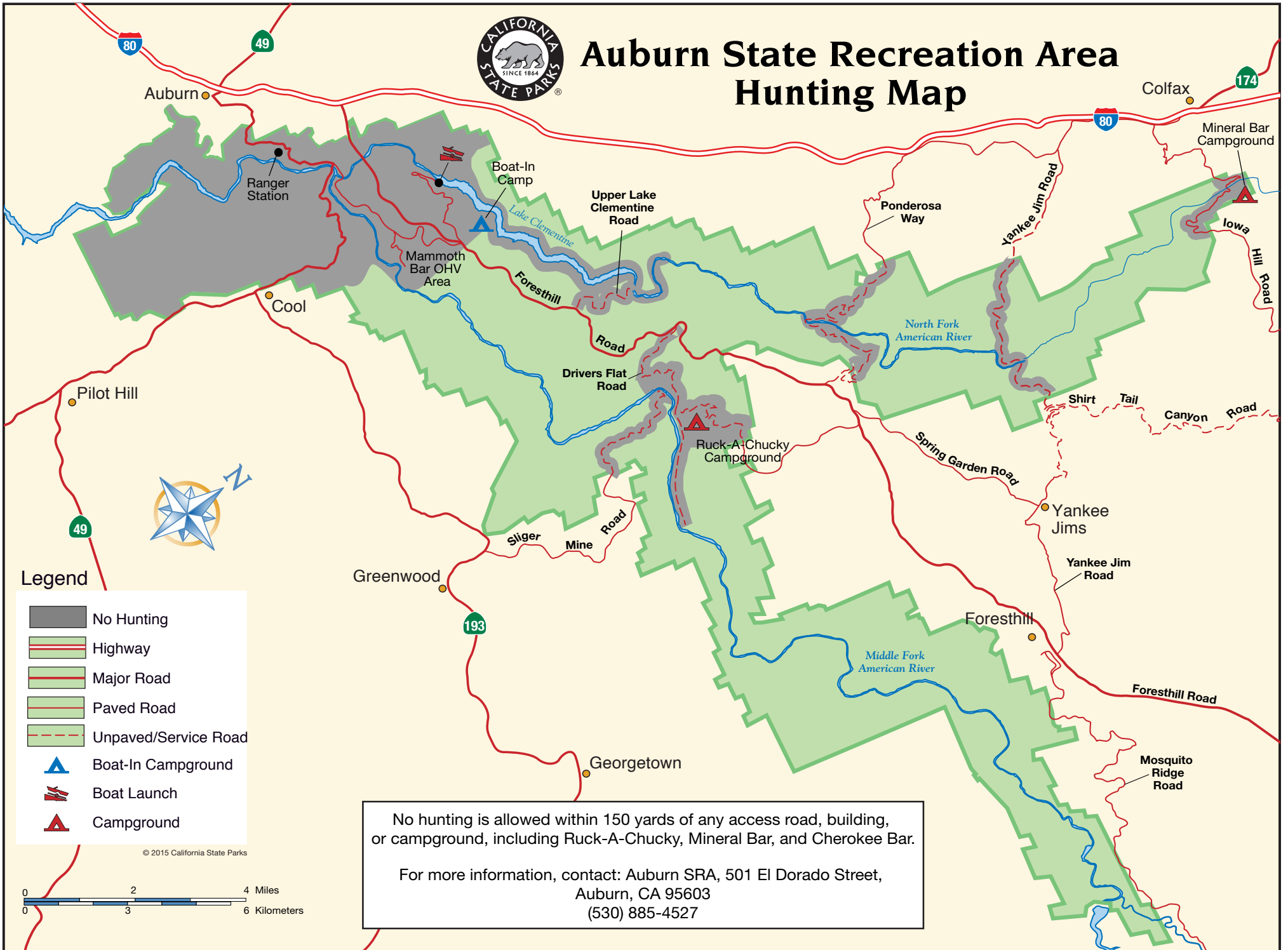
---

**Discover the many states of California.™**

For more information, visit our website at [www.parks.ca.gov](http://www.parks.ca.gov).  
**ALTERNATE FORMAT:** If you need this publication in an alternate format, contact [interp@parks.ca.gov](mailto:interp@parks.ca.gov).



# Auburn State Recreation Area Hunting Map



No hunting is allowed within 150 yards of any access road, building, or campground, including Ruck-A-Chucky, Mineral Bar, and Cherokee Bar.

For more information, contact: Auburn SRA, 501 El Dorado Street,  
Auburn, CA 95603  
(530) 885-4527